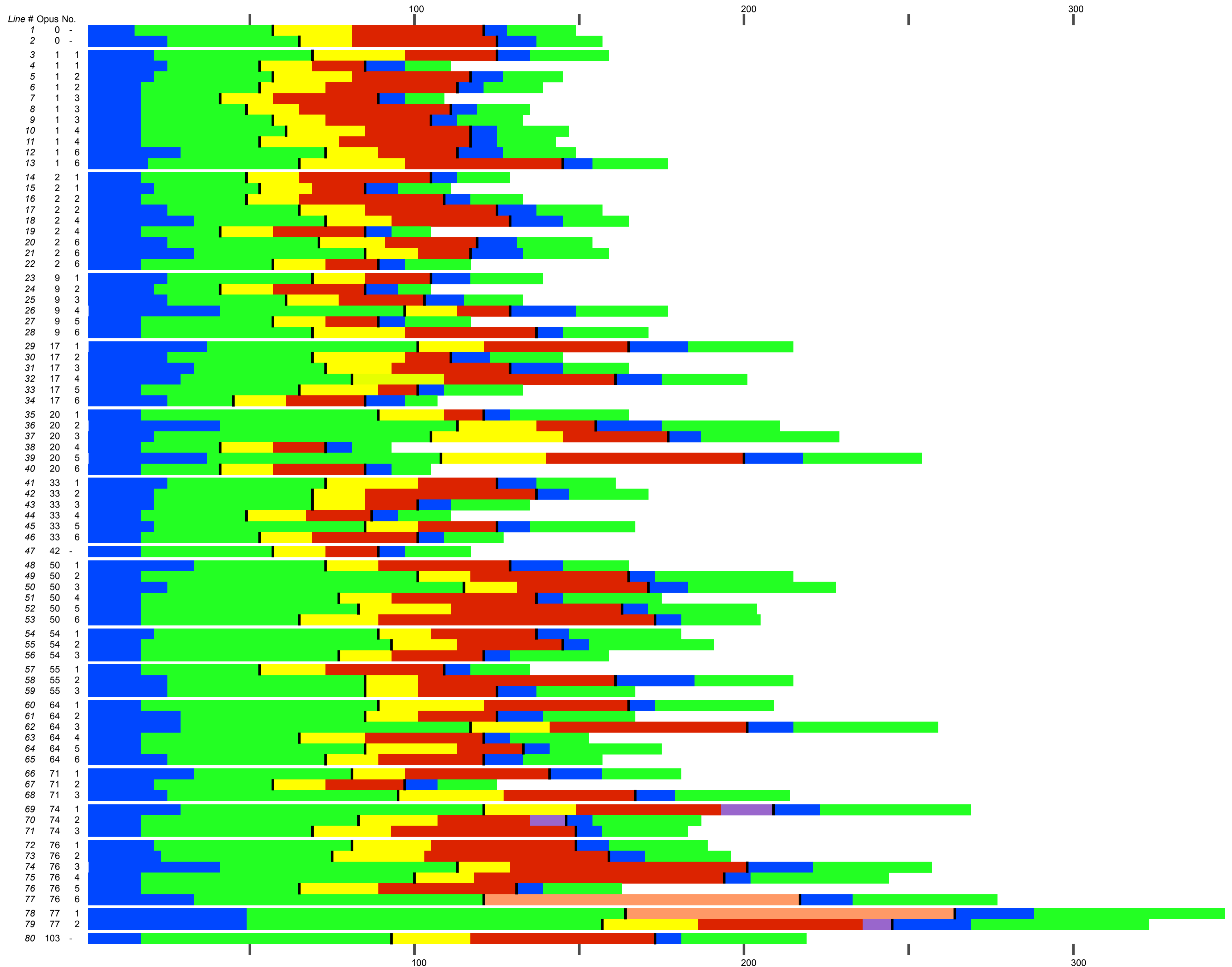


puH SQ Color Map
Opus Sort



The above map represents the large segments of the String Quartet Minuets.

The leftmost blue band provides the length of the A section (i.e. up to the first :||). The leftmost green band provides the length of the B section (i.e. from the first :|| to the second :||). | delineates the end of the minuet section.

The yellow band provides the length of the C section (i.e. up to the first :|| of the Trio). The red provides the length of the D section (i.e. from the first :|| of the Trio to the second :||). A second | delineates the end of the trio section.

Purple (D+) and orange (alt) are used for additional sections.

The rightmost blue and green bands represent the da Capos, normally half the lengths of the leftmost blue and green bands.

Black equidistant vertical marks at the top and bottom of the chart mark off 50 measure increments.